



THE  
**BRENTON**  
ARBORETUM presents:

# Leaf Walking Trail Adventure Packet



# ARBORETUM MAP





# Your Adventure Begins in the Tallgrass Prairie

The prairie began  
10,000 years ago and  
is home to many  
types of plants and  
animals.

## Pollinators



*Rusty Patched  
Bumblebee*

## Birds



*Peregrine falcon*

## Grazers



*Bison*

## Predators



*Great Plains Wolf*

## Grasses



*Big  
Bluestem*

Because the  
habitat is almost  
gone. Many  
species are almost  
gone.

## Flowers



## Small mammals



*Plains Pocket  
Mouse*

*Eastern Fringed  
Prairie Orchid*



Many prairie species can be  
seen every day

Look and See,  
can you find the following?



A



B



C



D

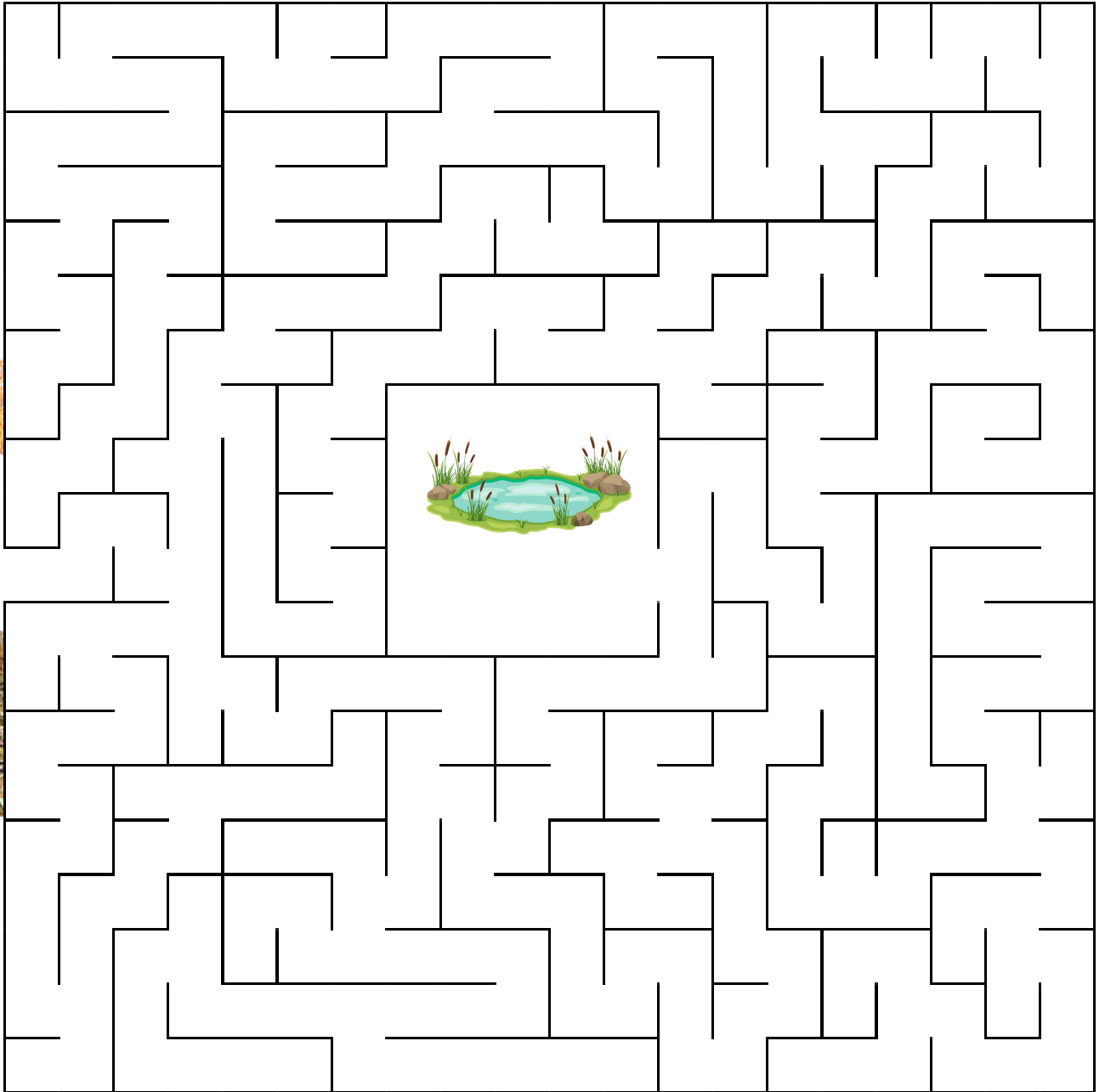


E

Can you name these prairie plants?



# Maze



Help the blue-racer escape the fire.



I see, I think,  
and I wonder!

Look at the colors  
around you...

What Can I  
See?

What does it  
make me  
think about?

What do I  
wonder  
about this?

Three large, empty, rounded rectangular boxes are arranged horizontally, each corresponding to one of the questions above. They are designed for a student to write their observations, thoughts, and questions.



# Sounds Along the Trail

Can you hear these familiar bird songs today? Who is singing?

**Cheery-  
up-  
Cheerily**

**A**



**Meee-  
ooowww**

**B**



**Dick, dick,  
see, see, see**

**C**



**Jeeah**

**D**



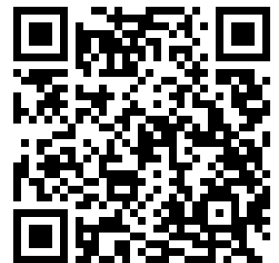
**Kerrr-r-  
r**

**E**



**Who cooks  
for you,  
who cooks  
for you all?.**

**F**





Can you find a tree with  
leaves and nuts like this?





# That's an American Chestnut!

The American chestnut, *Castanea dentata*, once covered forests across the eastern United States. Nearly four billion of these giant, fast-growing trees provided food, shade, and homes for countless animals and people.

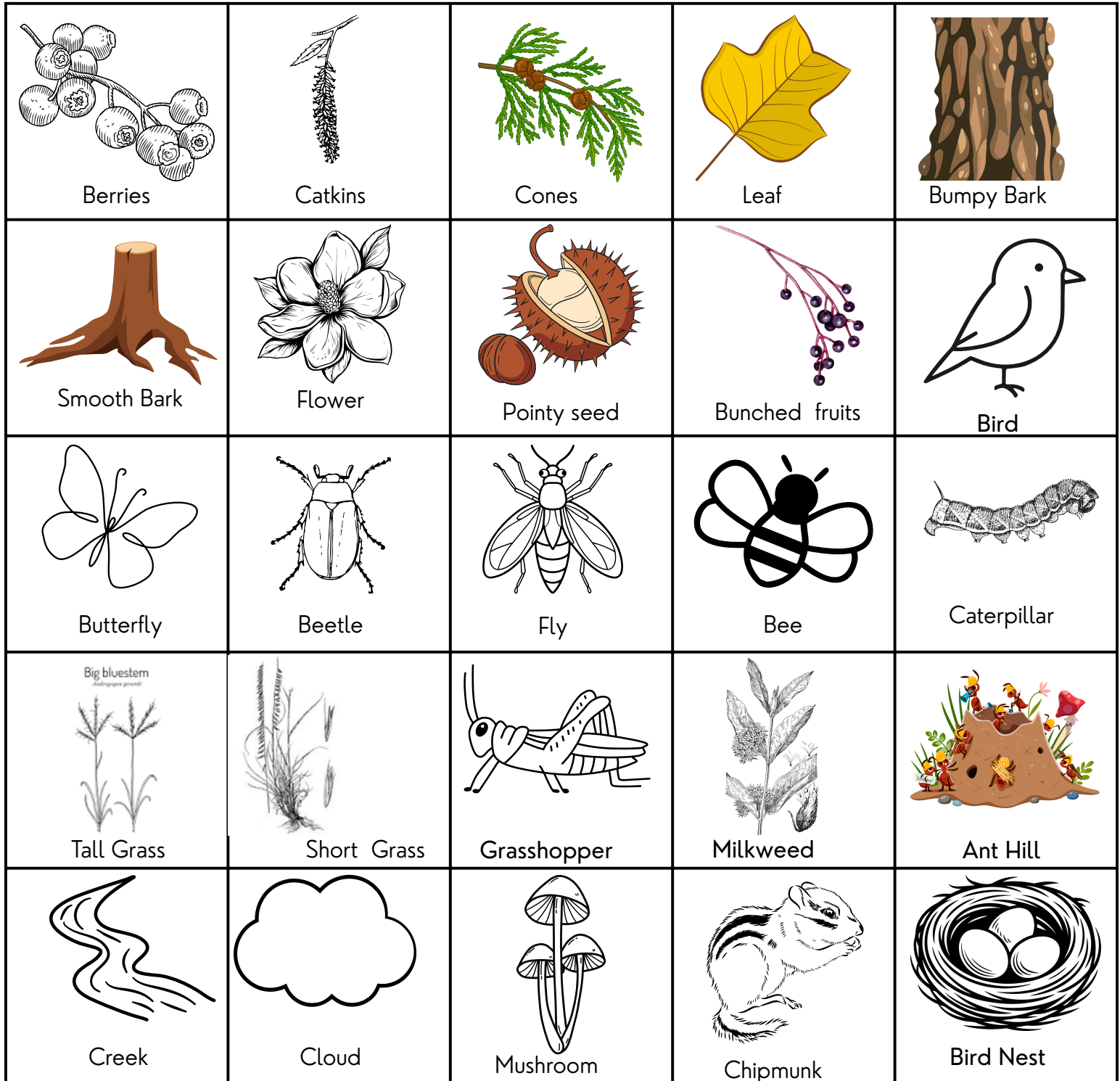
For thousands of years, Native Americans cared for the forests where chestnuts grew, using fire and other methods to help the trees thrive. The nuts were an important food source—packed with calories, vitamin C, and antioxidants—and they nourished both people and wildlife.

Chestnut leaves were full of nutrients that fed insects, which in turn fed birds and fish. Animals like squirrels, deer, bears, and turkeys all loved the sweet chestnuts.

Sadly, today the American chestnut is almost extinct. In the early 1900s, a fungus called chestnut blight spread through the forests and killed nearly every mature chestnut tree. Scientists and conservationists are now working hard to bring this “mighty giant” back to America’s forests.



# BINGO



# Match the Flower to the Tree



**Elderberry**



**American Chestnut**



**Tulip Tree**



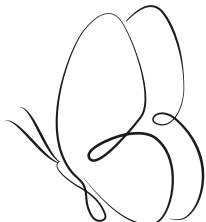
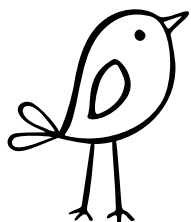
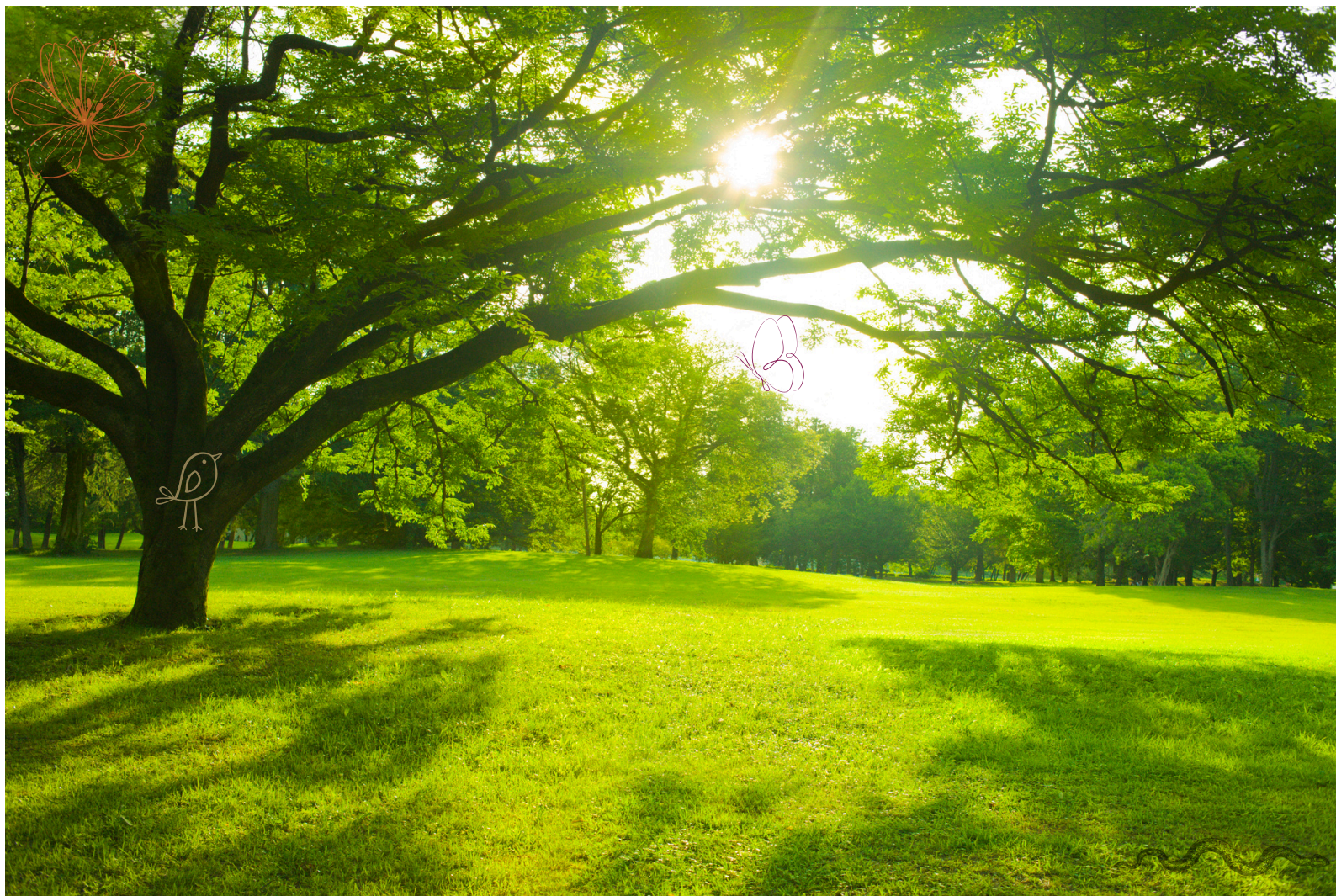
**Magnolia**





# Hidden Images

Circle the hidden objects





# Bridges Provide Connectivity



Humans build and use bridges to get across challenging terrain like rivers or roads. Animals use bridges in just the same way, but they can't build their own.

Humans have learned to help animals by building "wildlife bridges." These bridges help creatures safely get from one side of an obstacle, like a busy highway, to the other.



## Build a Bridge Challenge

Imagine an ant needs to cross a small ravine. Can you collect materials like leaves, twigs, bark, or cones to build a small bridge?

Remember to not harm the plants as you work!



# ANSWER KEY

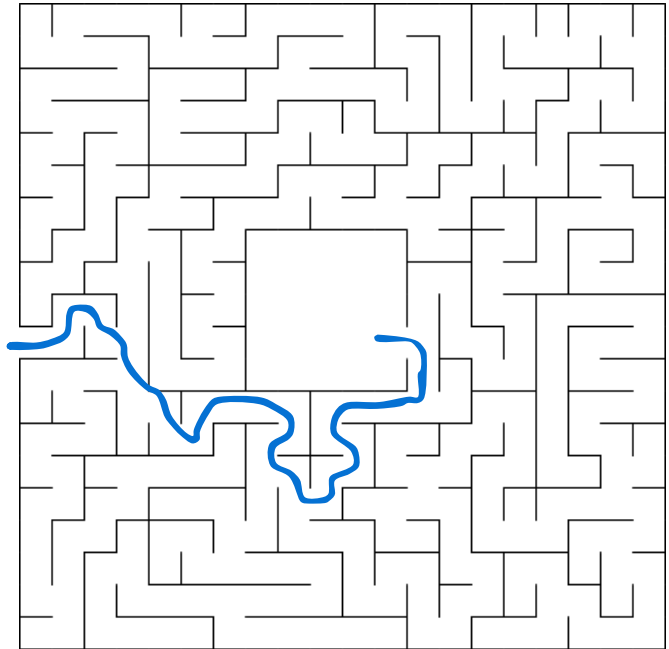
Page 4:

A. big bluestem, B. common milkweed, C. blazingstar, D. aster, E. Indian grass

Page 7:

A. American robin, B. grey catbird,  
C. dickcissel, D. blue jay,  
E. red-tailed hawk, F. barred owl

Page 5:



Page 10:



## Elderberry

## American Chestnut

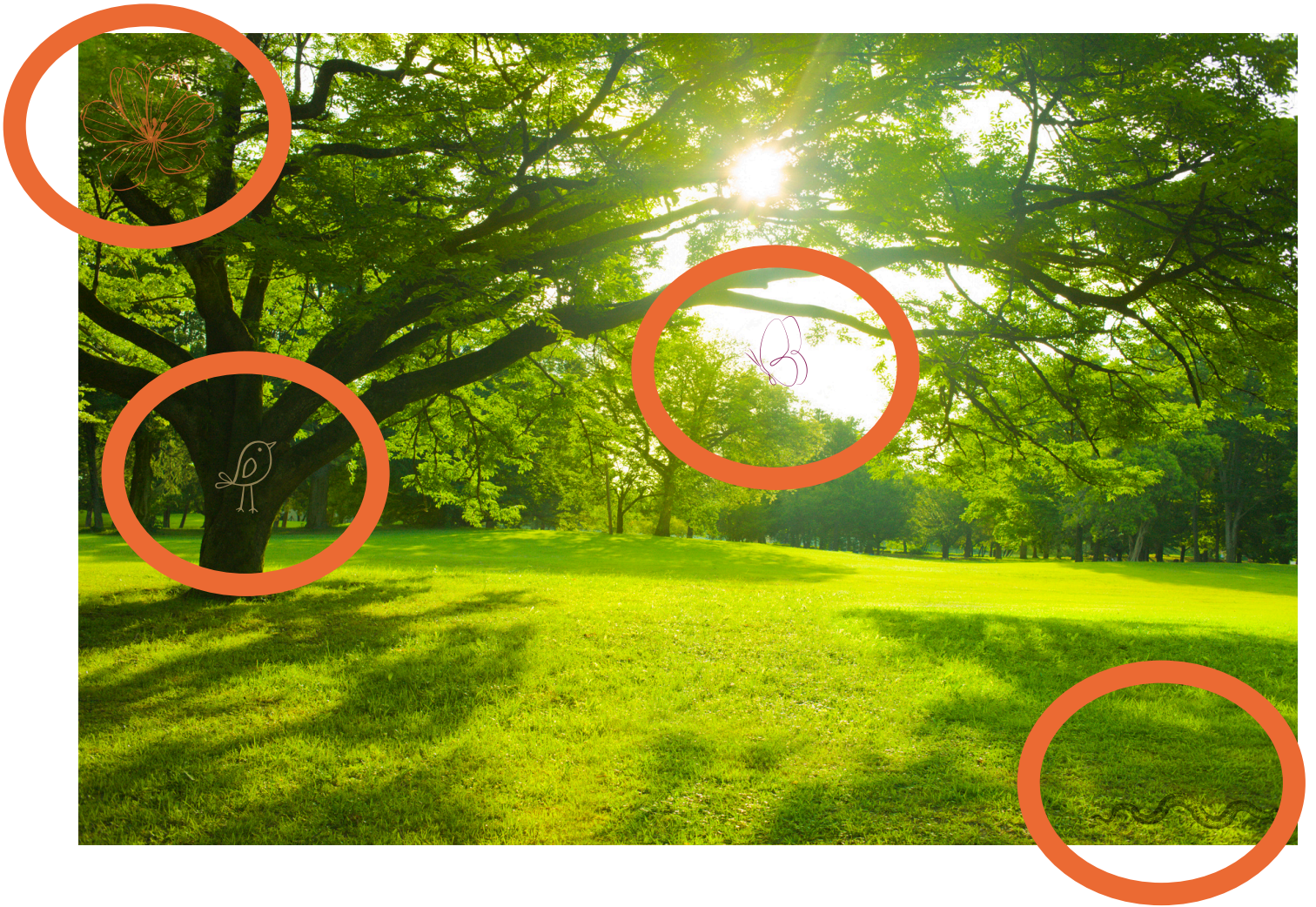
## Tulip Tree

# Magnolia



# Answer Keys

Page 12





THE  
**BRENTON**  
ARBORETUM

## For more educational opportunities at the arboretum visit:

[www.thebrentonarboretum.org/  
parents-and-teachers](http://www.thebrentonarboretum.org/parents-and-teachers)



[www.thebrentonarboretum.org/  
events](http://www.thebrentonarboretum.org/events)

*Thank you for exploring  
with us today!*